



67 Hill Barton Road, Exeter, EX1 3PW

£2,500 Per Calendar Month



- 4 bedroom detached home
- Large garden
- Spacious living areas
- Available March 2026
- Ample parking and garage
- Close to city centre and amenities
- Luxurious fitted kitchen
- Master ensuite
- Deposit amount: £2884

THE PROPERTY

We are pleased to offer this wonderfully presented detached very large family home coming available in March which has been extended to a very high standard throughout and is close to all local amenities.

This fine home offers a garage and parking for several cars, with log burner and a large garden. With added extras including large stain glass window, CCTV and aircon system fitted. Handmade oak front door with secured locking system and stain glass window. Ground floor

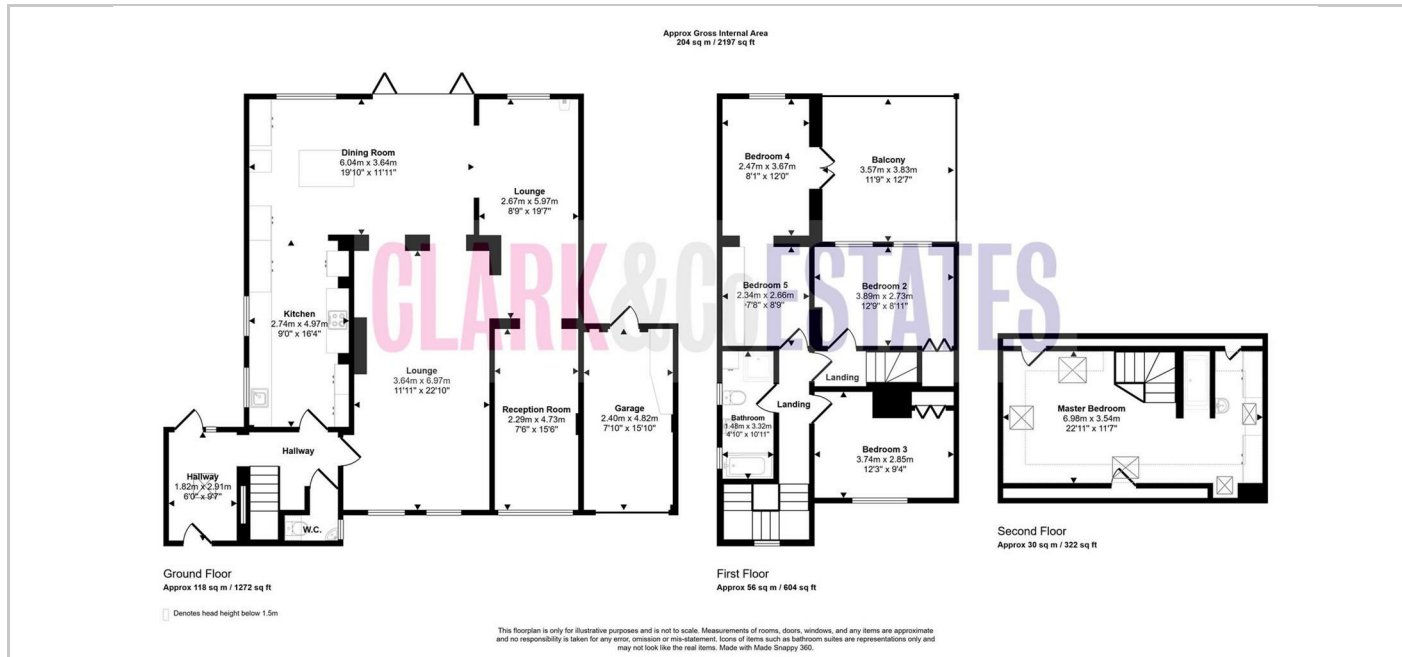
Entrance hall/book room with door to the rear and leading into the main hallway with doors to rooms, fitted cloakroom, stairs and landing to first floor. Cloakroom (fitted sink and toilet), fitted kitchen with electric oven and microwave, Quooker tap filtered water large lounge with log burner. Good size playroom, second reception room with log burner. Open plan dining room/sitting room with large bi-folding doors overlooking the garden. First floor

Landing with doors to all rooms and further stairs rising. Second bedroom to the rear with a good size dressing room with fitted, mirrored wardrobes and double doors to the rear balcony.

Third bedroom with storage space, currently housing CCTV controls. Fourth bedroom to the front of the property, also with fitted wardrobes. Main bathroom with roll top bath and separate shower room. Second floor

Large master bedroom with ample storage and en suite shower with sink. Storage space into the eaves. Fitted wardrobes and drawers. Delightful views over the garden Outside

Large garden with a patio, decking area with summer house and the rest laid to lawn. Large driveway with parking for several cars. The garage can be access via the rear garden and



SITUATION

Directions